



**BIG CYPRESS
LODGE**

IMPORTANT SAFETY INFORMATION

Tornado Procedures

In case of an imminent threat of a tornado in Shelby County, you will hear a warning message via the overhead intercom system. At this time you should TAKE IMMEDIATE COVER in the bathtub inside your hotel room's bathroom or proceed to one of the designated safety areas. Once a Tornado Warning has ended, you will be notified via overhead intercom that the storm has passed or an associate located in the designated safety area will inform you of this information. If you have a request for emergency assistance, please dial "0" and an operator will assist you.

Fire Detection Procedure

If you detect fire or smoke, call "0" for an operator or in the event of an emergency you may dial "911." If smoke is heavy, seal door with wet towels. Stay low to the floor where air will be clearer until help arrives.

Evacuation Plan Information

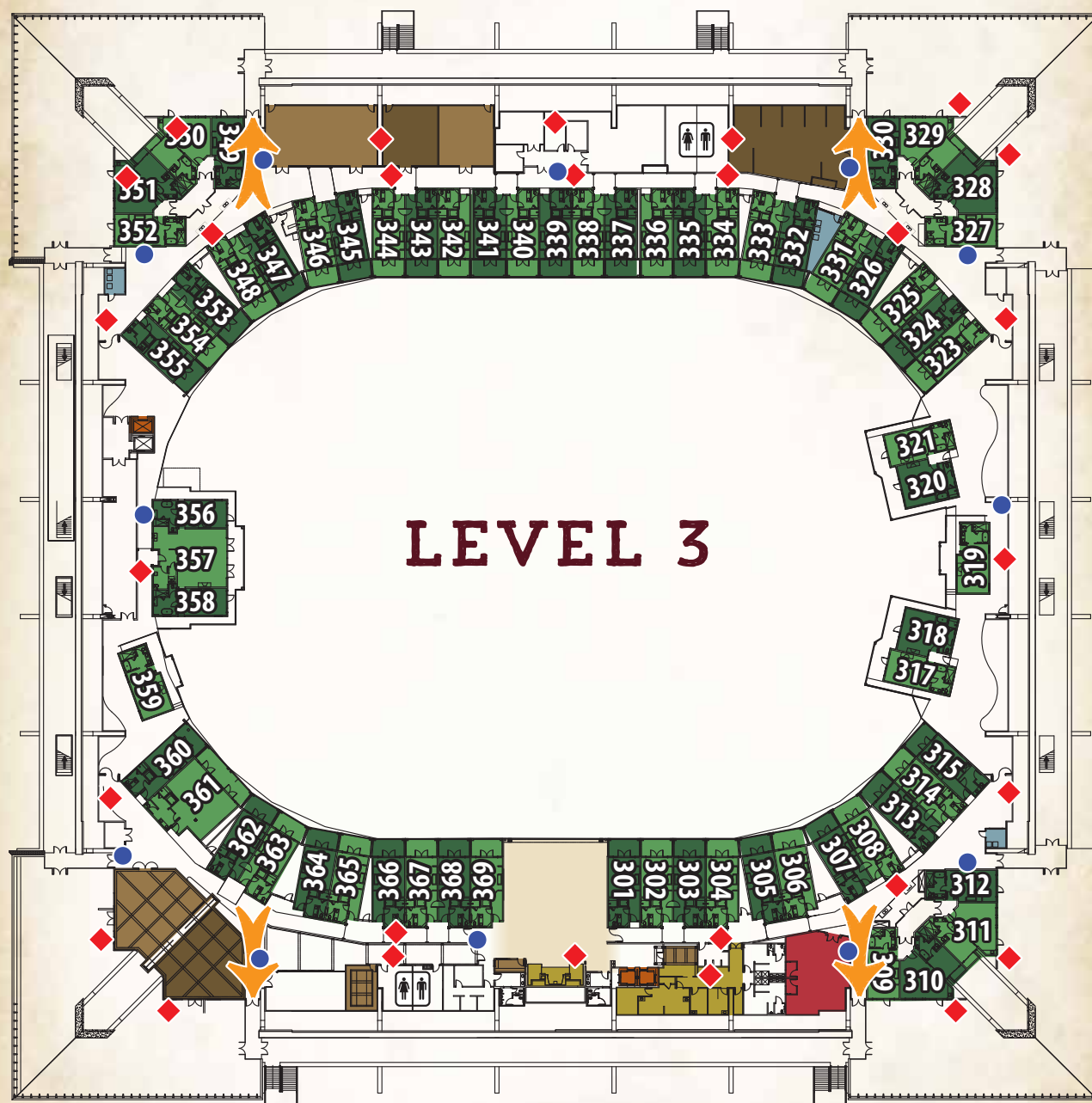
In case of fire emergency, exit through the closest door. Never open any door into a fire area before checking to see if it is smoking or if smoke is visible. Feel the door to see if it is hot, using only the back of your hand. Do not open the door if it is hot. If not hot, open the door cautiously and evaluate the condition of the evacuation route. If it appears safe, proceed to leave your room. Please close door behind you. Be sure to take your room key with you as you may have to re-enter your room if the evacuation path is blocked. Do not use elevator. Never re-enter or allow anyone to re-enter the building without permission from the Fire Department.

Fire Safety Process

Each guest room incorporates the following features to ensure maximum safety:

- Automatic smoke detection system: all floors and rooms have mounted detectors. The corridors on each floor have mounted detectors.
- An emergency generator or battery pack powered lighting system will provide electrical power sufficient for evacuation purposes.
- Fire Extinguishers are clearly located throughout the building.
- All emergency exits are marked with illuminated EXIT signs.
- Emergency fire doors are located at all stairwell exits.
- An automated sprinkler system is located throughout the building.
- Fire Safety Process maps are located in each guest room, stairwell and elevators.

EMERGENCY EVACUATION MAP



FIRE EXTINGUISHER
LOCATIONS

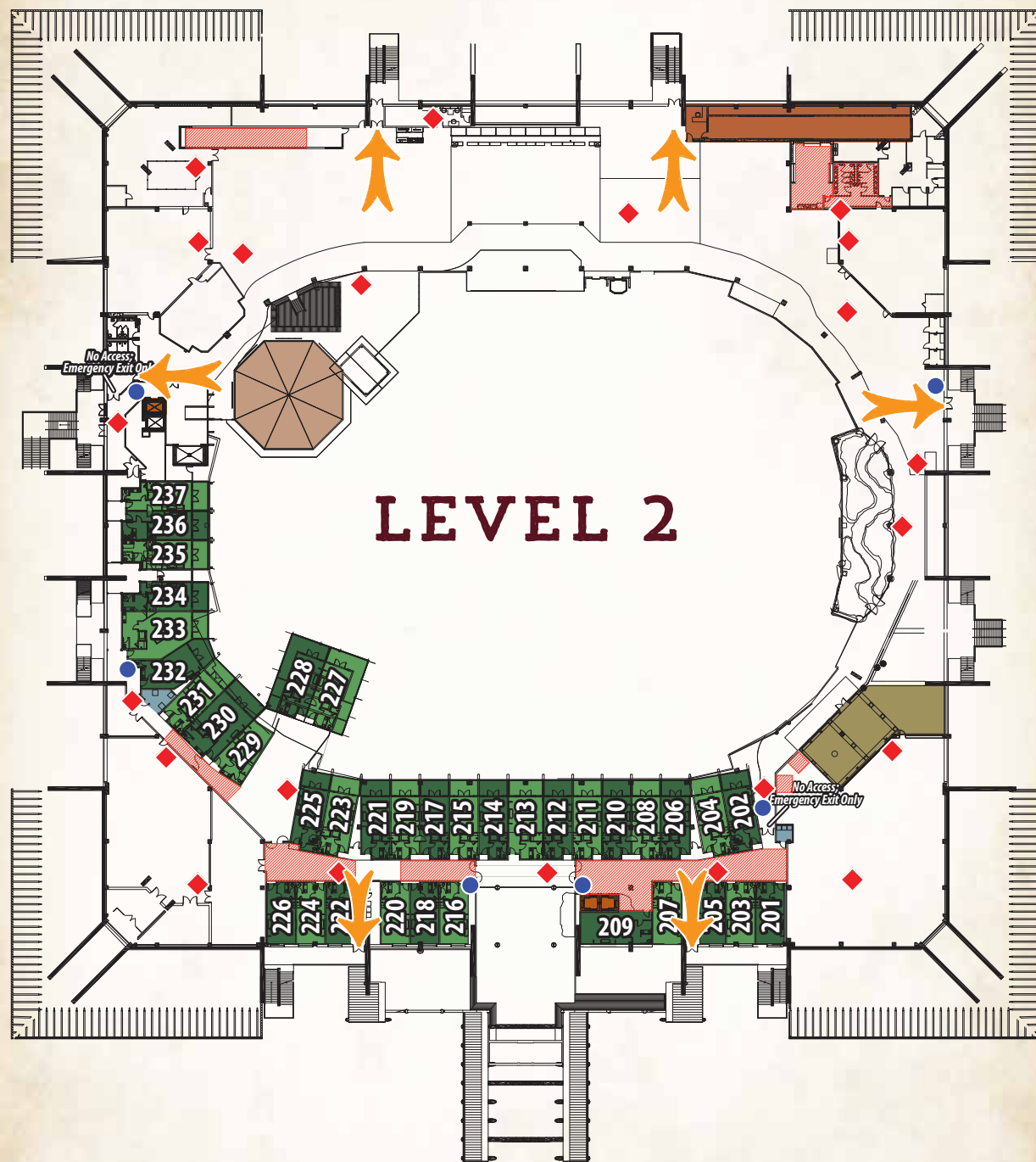


EVACUATION
ROUTES



FIRE HOSE
CONNECTIONS

EMERGENCY EVACUATION MAP



- | | | | |
|---|---|--|---|
|  |  |  |  |
| STORM SHELTER
LOCATIONS | FIRE EXTINGUISHER
LOCATIONS | EVACUATION
ROUTES | FIRE HOSE
CONNECTIONS |